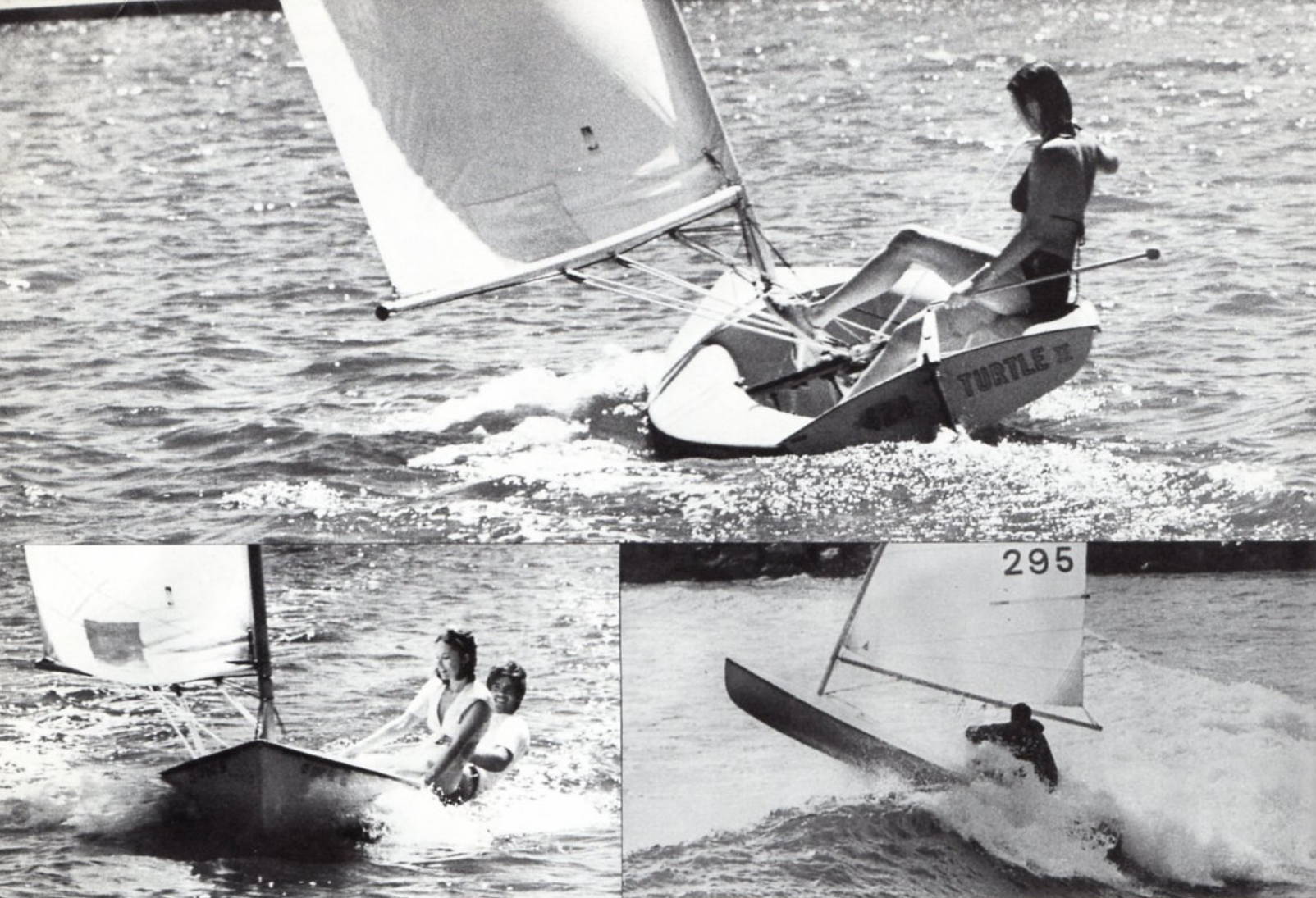




Banshee



EXCITING • SIMPLE • FUN • PORTABLE • STABLE

Excitement! That's what sailing the Banshee is really all about. She's at home in any kind of water . . . heavy weather, light air, even rugged surf. When the wind is up you really scream along . . . and yet she is so simple and easy to handle. Her almost five-foot beam and deep full hull shape give exceptional stability. Great for the beginner, fantastic for the expert. She's designed for free and easy fun!

Talk about freedom! Sail alone whenever you want or take along a friend. Car top Banshee or put her on a trailer. She yearns for wind and water. Invite her to your beach party. Lash your camping gear to the bulkhead and go exploring. When the sun is shining and the

breeze is gentle, the cockpit makes a terrific place to bask. You'll never have trouble finding an excuse to spend the weekend at the beach or lake.

Banshee's super-efficient design makes her incredibly responsive. A foxy seven color rainbow sail is also available. You'll attract lots of attention and meet new friends. There are Banshees everywhere . . . join a group for an out of sight sail. There are numerous organized sailing events too. So if it's camaraderie and lifestyle you're looking for, you're definitely picking the right boat. Banshee is the smart way to fun and freedom.



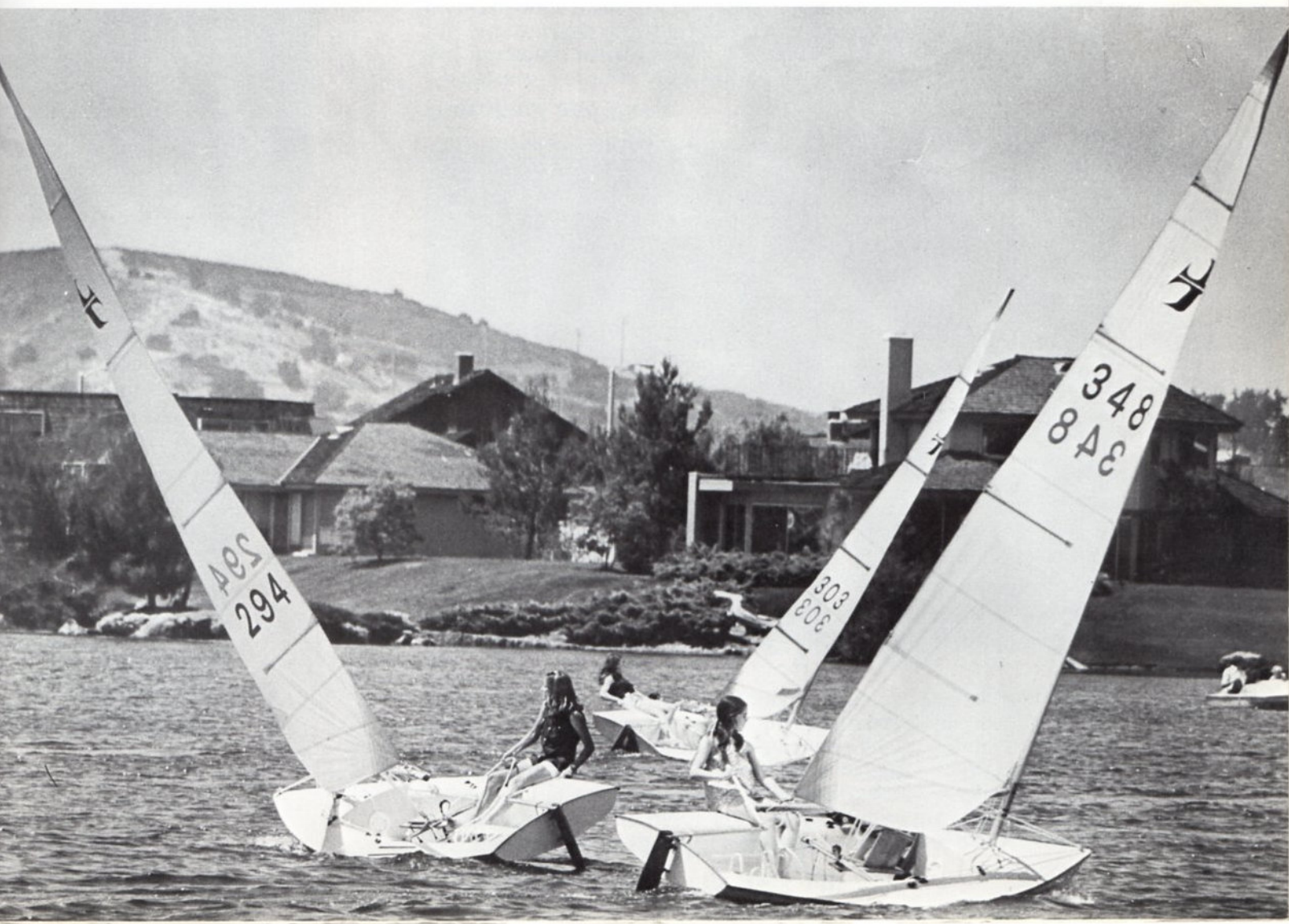
CHALLENGE!

The Banshee is the first new generation high-performance single-hander. She literally leaps up into a plane easily . . . and long before other boats of her size. Simple for the beginner and recreational sailor . . . she rigs quickly, handles easily, and has the minimum of necessary controls. A fun boat for the whole family to enjoy. The beginner can quickly learn to enjoy Banshee's full performance.

She was designed to perform in the heavy winds and steep chop of San Francisco Bay. Her construction is rugged woven glass cloth and mat hand-layup with extra reinforcement at highly stressed areas. In *Yachting's* 1974 OAK Regatta, in a wide range of wind

conditions, she literally sailed away from all competition . . . decisively beating, boat-for-boat, 15 of the best competitive boats to win the Single-Hander trophy.

The Banshee Class is organized into districts and fleets in all major U.S. sailing areas, Canada and Australia. Fleets are forming in Europe. The Association publishes the *Banshee Bulletin* which includes informative articles on sailing, coordinates regional and national championships, and encourages local fleet development. The class supports a comprehensive racing program for every Banshee owner. The continuing challenge of racing provides stimulation to increase skipper skills.



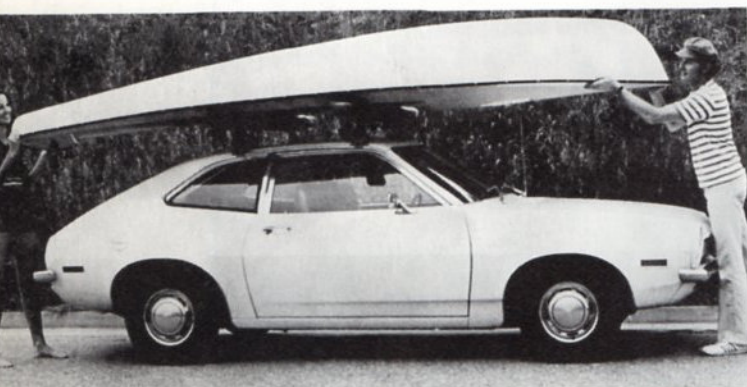


SAFE

A 70-pound boy or girl can right this boat . . . from saildown in the water . . . up and underway in a matter of seconds. Banshee floats on her side and comes up with a completely dry cockpit. Foam flotation makes her unsinkable. Smaller optional T sail also available.

ROOM FOR FRIENDS

Passengers can sit inside Banshee's eight-foot-long cockpit on the centerline. Plenty of headroom under the boom . . . even for a six-footer. Her curved seat tanks and deep floor are proportioned for comfort and hiking.



EASILY CARTOPPED

Banshee's 120-pound hull is 10 to 30 pounds lighter than her competition . . . making her the easiest to cartop. The 13-foot length is perfect for overhead garage or carport storage on a pair of lines from the beams or rafters.

CHALLENGING

Advanced sailors can add a mid-boom traveller to adjust sail shape and leech tension when beating and reaching . . . they can also add remote dual controls for the downhaul, vang and outhaul so adjustments can be made while hiked out and an efficient suction bailer.



YOUR BANSHEE DEALER

MINI-YACHT SALES
7968 MACOMB
GROSSE ILE, MICH. 48138

671-6868

Banshee International Inc. 12186 Winton Way, Los Altos Hills, CA 94022